

INTEGRITY  
& PROFESSIONALISM

# LEGACY OFFSHORE

## CORPORATE OVERVIEW

Legacy Offshore is an innovative provider of subsea construction and inspection services to domestic and international oil and gas industries operating at water depths up to 1000 feet. Capabilities include, but are not limited to, offshore and inland diving services, offshore construction and onshore fabrication. Along with an expanding fleet of diving support vessels, Legacy Offshore provides experienced offshore personnel and a project management team with a proven track record in the Gulf of Mexico, Latin America and other foreign markets.

## ABOUT US

Launched in 2007, Legacy Offshore is well-positioned to manage and execute all aspects of subsea construction and fabrication projects. Legacy Offshore is based in Broussard, Louisiana and has an office in Houston, Texas as well.

## OUR PEOPLE

The people of Legacy Offshore are a reflection of the integrity and professionalism shared by our hand-picked management personnel and experienced dive teams. Each member of Legacy Offshore is committed to providing exceptional customer service, quality project management, and the reliable subsea construction services owed to each of Legacy Offshore's customers. We have ensured that the strength of this company will rest with the capable individuals that will operate as a team serving our customers to the highest standards in the industry.



## DIVING SERVICES

Legacy Offshore's subsea division consists of diving services performed offshore and inland utilizing highly qualified project management and dive teams with an array of diving packages capable of depths to 1000 feet. Legacy Offshore offers the following diving packages:

- Air Diving Package
- Heliox Diving Package
- Nitrox Diving Package
- Saturation Diving

## OFFSHORE SERVICES

- Platform Inspections
- Pipeline and Platform Abandonment Projects
- Pipeline Inspection, Repair and Installations
- Rig Support and Maintenance
- Wellhead Installations, Repair and Abandonments
- Riser and Riser Clamp Installations, Repair and Abandonments
- Marine Salvage Projects
- Underwater Surveys
- Pipeline and Platform Anode Retrofits
- Subsea Tree Installations, Repair and Removals
- Underwater Welding and Burning Services

## FABRICATION SERVICES & DRILLING PRODUCTS

Our full service fabrication and corrosion control facility provides the following services:

- Custom Drilling Templates
- Riser Clamps
- Well Guards
- Navigational Aid Installation and Repair
- Trash Caps
- Spool Pieces
- Magnetic Subsea Relocations
- Full Blasting and Painting Facility
- Custom Tooling or Support Equipment
- Blasting, Painting, & Corrosion Control
- Certified Welding of Steel & Aluminum
- Smart Buoys



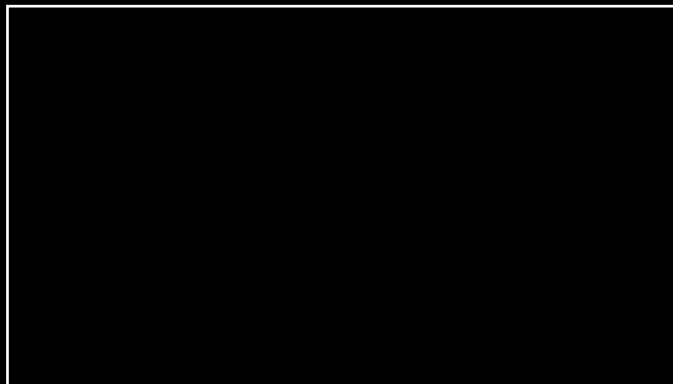
## INLAND SERVICES

- Sea Chest Cleaning and Blanking
- Hull Inspections, Repair and Maintenance
- Hull Cleaning, Inspection and Repair
- Propeller Polishing and Repair
- Dock Inspection, Maintenance and Repair
- Lake and River Pipeline Crossing Inspections and Repair
- Underwater Welding and Burning Services
- Piling Sheet and Encapsulations Services
- Potable Water Tower and Tank Inspections
- Dam Inspections and Repairs
- Sediment and Shell Removal

## MISSION STATEMENT

Legacy Offshore is proud to be a leader in the subsea construction and fabrication industry.

Legacy Offshore is committed to providing our clients with top quality service in a safe and professional manner. Our entire staff has been hand-picked specifically for the goal of developing long lasting relationships with our customers by exceeding their expectations and providing exceptional quality in all that we do.





## SAFETY POLICY

Legacy Offshore believes that every job can be done in a safe manner. The process begins with management listening to field personnel and being able to make daily changes to adjust to current situations. Company policy dictates that all employees, sub-contractors and individuals involved with day-to-day operations will conduct business in a manner that is professional and protects the safety of all involved. Legacy Offshore is committed to identifying and eliminating, or managing, safety hazards with all tasks by:

- Providing a safe and healthy work place for all individuals working for, or with, Legacy Offshore.
- Identifying, communicating, training and managing hazards for everyone in the work place.
- Increasing awareness and participation in safety-related programs.

## COMPANY GOALS

- To provide a safe and healthy work place for all individuals working for or with Legacy Offshore.
- To identify, communicate, provide training and means to manage hazards for everyone in the work place.
- To increase everyone's awareness and participation in safety-related programs.
- ZERO INJURIES FOR PERSONNEL, ZERO SPILLS, and ZERO DAMAGE TO EQUIPMENT are the key goals of Legacy Offshore, LLC.

Safety has to start with management. Management must take the steps to improve safety daily. In addition, management must listen to personnel in the field and make changes as needed. Everyone working for Legacy Offshore must follow company, client and government safety policies, wear personnel protective equipment and establish safe guards not only on the job, but everywhere. Use the tools and the safety programs to communicate hazards everyone working on the job. To establish training programs to communicate hazards and a means to manage hazards. Encourage employee participation in safety programs to improve safety, protect the environment and reduce equipment damage.

These goals can only be achieved through TEAMWORK.

### CORPORATE OFFICE

1042 Petroleum Parkway  
P.O. Box 1470  
Broussard, Louisiana 70518  
Phone: 337.365.6161  
Fax: 337.365.6162  
Email: [inquiries@legacyoffshore.com](mailto:inquiries@legacyoffshore.com)  
Website: [www.legacyoffshore.com](http://www.legacyoffshore.com)

### SALES/ESTIMATING

100 Enterprise Avenue  
League City, Texas 77573  
Phone: 281.334.2266  
Fax: 281.334.2206  
Email: [inquiries@legacyoffshore.com](mailto:inquiries@legacyoffshore.com)  
Website: [www.legacyoffshore.com](http://www.legacyoffshore.com)

[WWW.LEGACYOFFSHORE.COM](http://WWW.LEGACYOFFSHORE.COM)



# DPSV – ADAMS VISION

# DSPV ADAMS VISION

## MAIN PARTICULARS

LENGTH, OVERALL	307 FT	93.6M
LENGTH, B.P	284 FT	86.6M
BREADTH	64.62 FT	19.7M
DEPTH	25.75 FT	7.85M
DRAFT	20.66 FT	6.3 M
DECK CAPACITY	11,259 sq. ft.	1046M2 Area, 10t/M2 Loading
MOONPOOL	19.68' x 17.32'	6.0 X 5.28M
ROV	Optional	

## MAIN PROPULSION

MAIN PROPELLERS	2 X AZIMUTH THRUSTERS AZP 100 FP
RETRACTABLE THRUSTERS	1 X RETRACTABLE AZIMUTH THRUSTER
TUNNEL THRUSTERS	2 X TUNNEL THRUSTERS TT 2200 DP CP

## CRANE

2 X 5Te @ 15m OUTREACH, ONE MAN RIDING CERTIFIED  
 100Te HYDRAMARINE OFFSHORE KNUCKLE JIB CRANE ACTIVE  
 HEAVE COMPENSATED 1 TE MAN RIDING CAPACITY  
 25 METRIC TONS @32M OUTREACH SINGLE LINE (MAX)  
 75 METRIC TONS @20M OUTREACH SINGLE LINE  
 100 METRIC TONS @15M OUTREACH SINGLE LINE  
 WINCH/CRANE ARE IN BASE CASE DESIGNED FOR SWL 100 SINGLE  
 LINE RESULTING CRANE LOAD  
 75 TS SWL TO 2,000 M DEPTH GIVING 100 TON RESULTING  
 CRANE LOAD @ MAX RAD 15M

## SAT SYSTEM

9-MAN 984'



## ACCOMODATIONS

68 BERTHS

## DOCUMENTATION

YEAR BUILT:	2009
FLAG:	BAHAMAS
DP SYSTEM:	DP2

## TONNAGE

GROSS TONNAGE:	4850
NET REGISTER TONNAGE:	1450
DEAD WEIGHT:	4500TE
MAX. SPEED APPROX:	15.5 KNOTS
FUEL TYPE:	MGO
BALLAST WATER:	404,183 FT
DRILL WATER:	346,065 FT
FRESH WATER:	264,172 FT
FUEL OIL:	303,797 FT

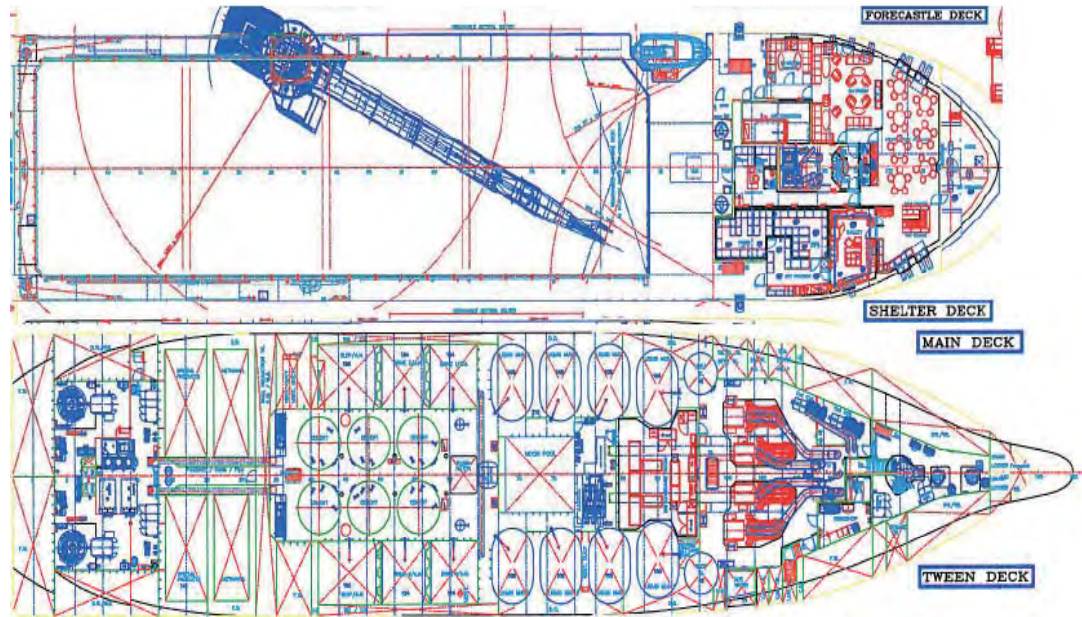


NOTICE: The data contained herein is provided for convenience of reference to allow users to determine the suitability of the Company's equipment. The data may vary from the current condition of equipment which can only be determined by physical inspection. Company has exercised due diligence to insure that the data contained herein is reasonably accurate. However, Company does not warrant the accuracy or completeness of the data. In no event shall Company be liable for any damages whatsoever arising out of the use or inability to use the data contained herein.

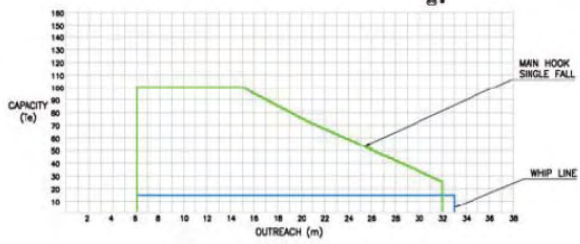
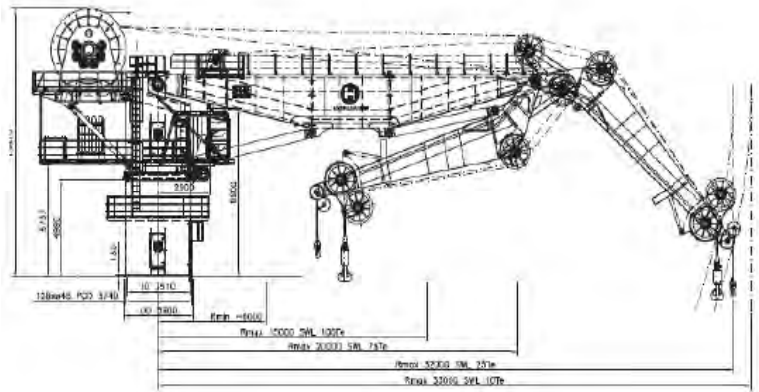
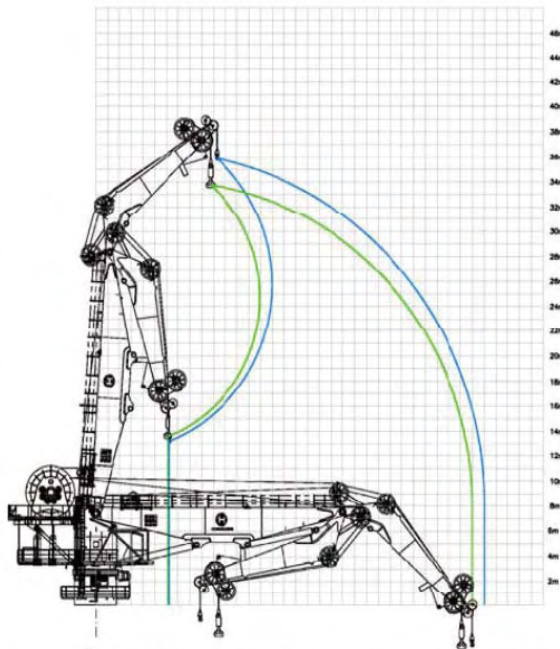


# DPSV – ADAMS VISION

GA  
DRAWINGS



CRANE CURVE





# DSV - SUN RIVER

## MAIN PARTICULARS

LENGTH OVERALL	205 FT	62.48 m
BEAM	44 FT	13.41 m
DEPTH	15 FT	4.572 m
LIGHT DRAFT	10.6 FT	3.23 m
MAXIMUM DRAFT	13 FT	3.96 m
CLEAR DECK AREA	139' 4" X 33'7"	
BOARDED DECK AREA	128' 5" X 33'7"	

## CAPACITIES

DECK CARGO	790 TONS
CARGO FUEL	159,516 GALLONS
POT./BALLAST WATER	142,082 GALLONS
ESCAID OIL	538 BBLS
NUMBER OF TANKS	1

## MACHINERY

MAIN ENGINES	TWO (2) EMD PT: 12-645-E2 HP-3,000
REDUCTION GEARS	TWO (2) REINTJES 1850 WAV 1850 4:1
GENERATORS	THREE (3) 8V71 DDA ENGINES W/DELCO 150 KW GEN@ 1800
RPM BOW THRUSTER	BIRD-JOHNSON 10-300 HP

## NAVIGATION/COMMUNICATIONS

RADARS	TWO (2) FURUNO-FR 8100D
RADIOS	TWO (2) VHF HORIZON INFINITY
FATHOMETER	TWO (2) SSB SEA 330
AUTO PILOT	DATA MARINE MODEL 3000 SPERRY 8T
GPS	FURUNO NAV. GP70
LOUDHAILER	STANDARD LH10
NAVTEX	FURUNO DFAX - FAX 207
COMPASS	SPERRY SR 130
NECODER	DSC 1000 47 (REC4712)
EPIRB	ACR 406



## CRANE

50 TON (MAN RATED)

## TONNAGE

GROSS TONNAGE	336
NET TONNAGE	229
INTERNATIONAL GROSS TON	961
INTERNATIONAL NET TON	288

## DOCUMENTATION

CLASSIFICATION	USCG ABS (HULL&MACH. CLASS)
TYPE	4-POINT DSV
BUILT/REBUILT	1979/2008
FLAG	USA

## ACCOMMODATIONS

CERTIFIED TO CARRY 38



NOTICE: The data contained herein is provided for convenience of reference to allow users to determine the suitability of the Company's equipment. The data may vary from the current condition of equipment which can only be determined by physical inspection. Company has exercised due diligence to insure that the data contained herein is reasonably accurate. However, Company does not warrant the accuracy or completeness of the data. In no event shall Company be liable for any damages whatsoever arising out of the use or inability to use the data contained herein.

DSV SUN RIVER



# DSV - SUN RIVER

GA  
DRAWINGS

